

Amber Galleries

16.02.24 /  
23.02.24

# SUB- CONSCIOUS SKIES



## AN EXHIBITION FROM NICK QUIRKE



# NICK QUIRKE. BRITISH.

“My Work explores the relationship between light and dark, and how colour can manipulate structures. I like my work to give the viewer just enough information that they can understand the form whilst maintaining a contemporary abstract style”

Nick studied Fine Art throughout his life and attended Byam Shaw School Of Art and Design, now part of Central St Martins in London. After leaving London Nick moved to Bristol where he studied and completed a BETEC Diploma in Fine Art, at the acclaimed Spike Island. Experienced in exhibiting artwork at prestigious galleries and events

Nick's obsession with the effects of light in the sky and reflections on water, has enabled his fascination to develop his own style of strong rich colours and apply his strokes in an impasto application that allow the colours to explode out from the canvas. Nick's new works are exploring the use of Graffiti style paint, which are then carefully blended with oil paint.

Dream it.

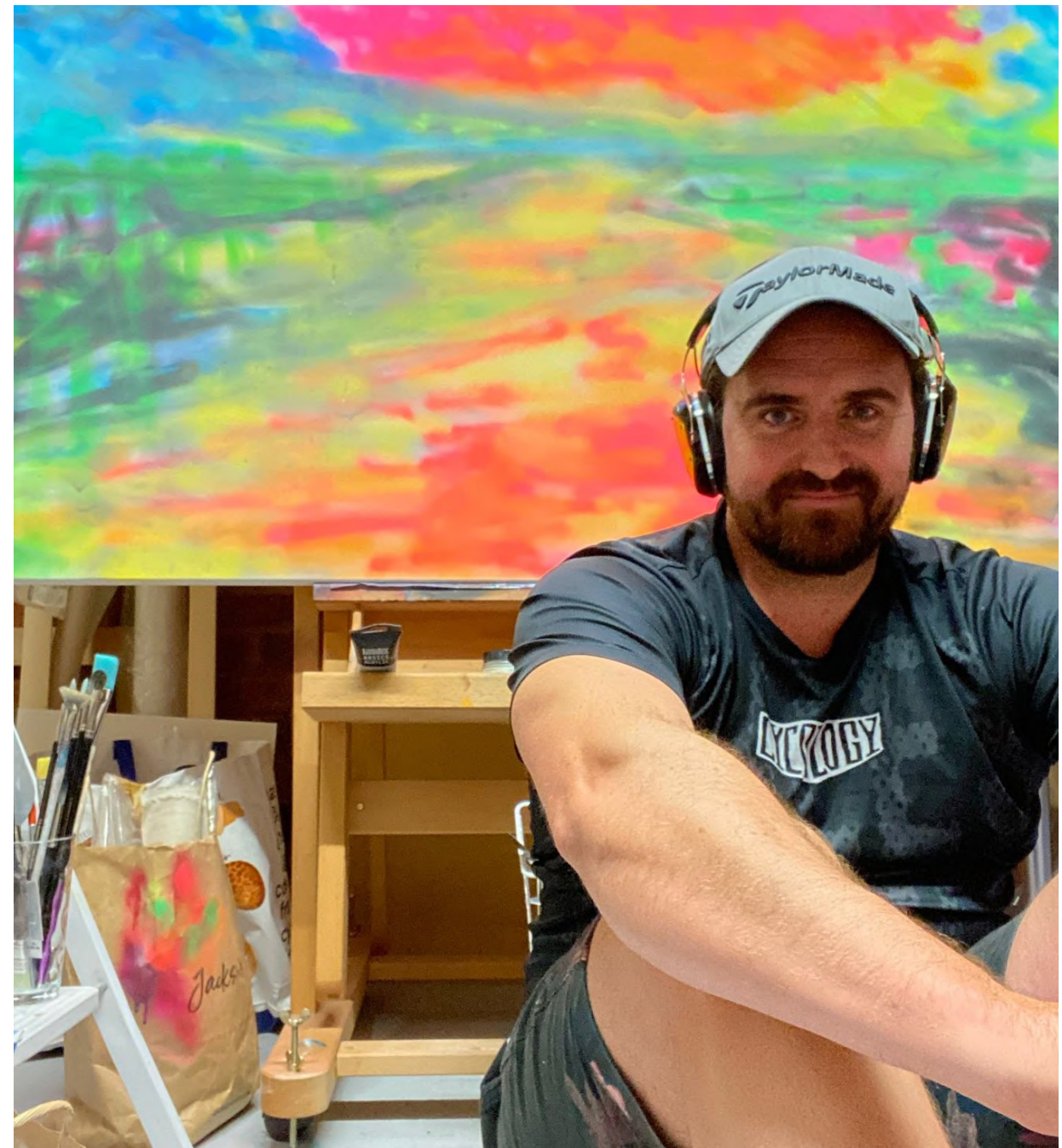
“It all begins with an idea, but the exciting part is putting those idea's into practice. Memories are a part of what make the people we are today. They can impact our lives, direct our live's and our future's in all kind's of way's. I like to help share those memories by expressing those emotion's with paint”.

Make it.

For me, producing a commission is about capturing a moment, by gaining an understanding with the person or people. “Freeze frame it, and tell me what it looks like”.

Live it.

“At the end of the day, seeing people happy, smiling and satisfied, this is what makes me enjoy painting”.



## RADIANT IMPRESSIONISM

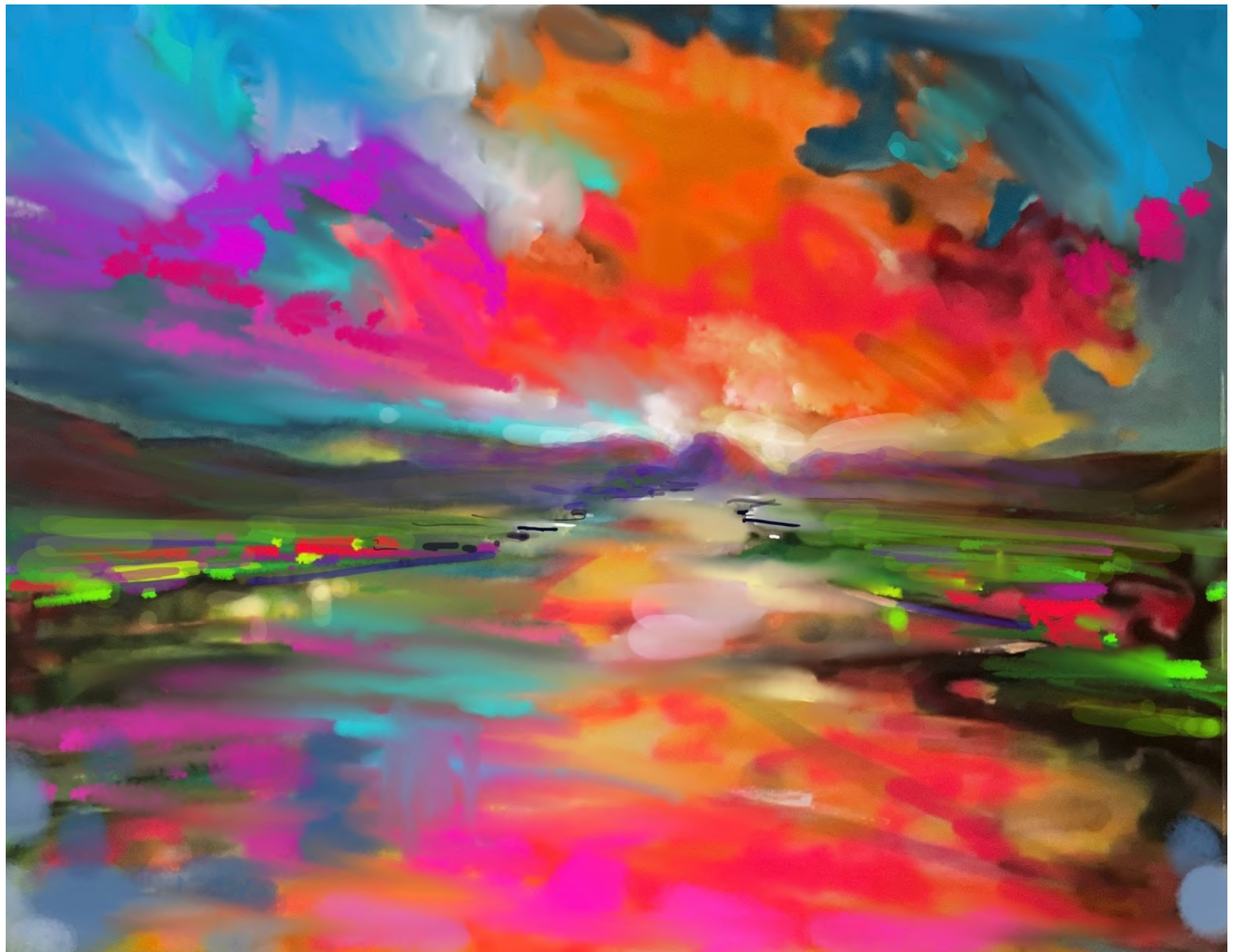




# A GREATER SKY, HOLY ISLAND, NORTHUMBERLAND

2024  
Original painting  
45 x 61 cm





# WATER IN THE RAIN

2024  
Original painting  
153 x 123 cm



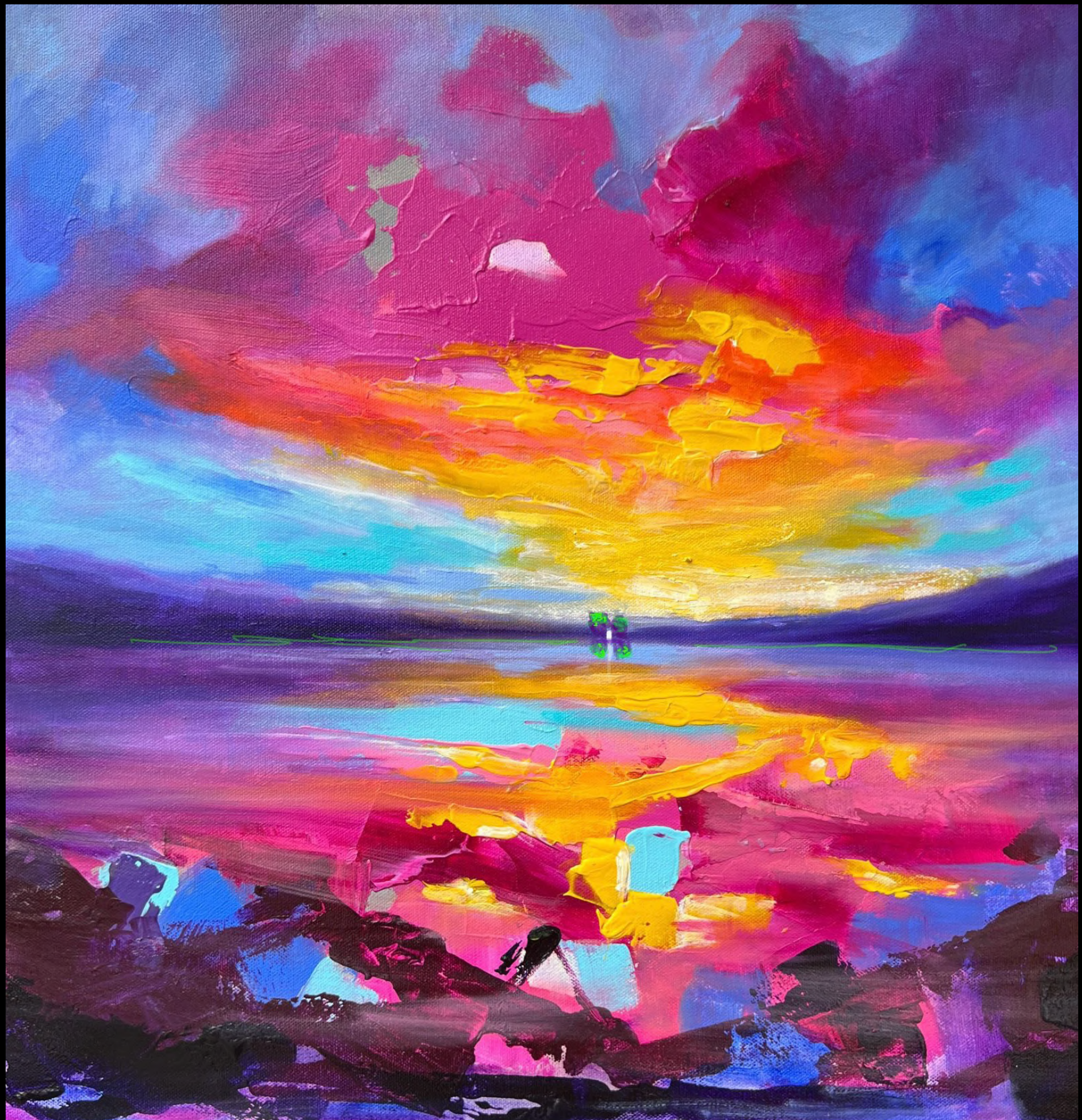
# REGATTA SKIES



2024  
Original painting  
60 x 60 cm



# CANDY SKIES



2024  
Original painting  
60 x 60 cm

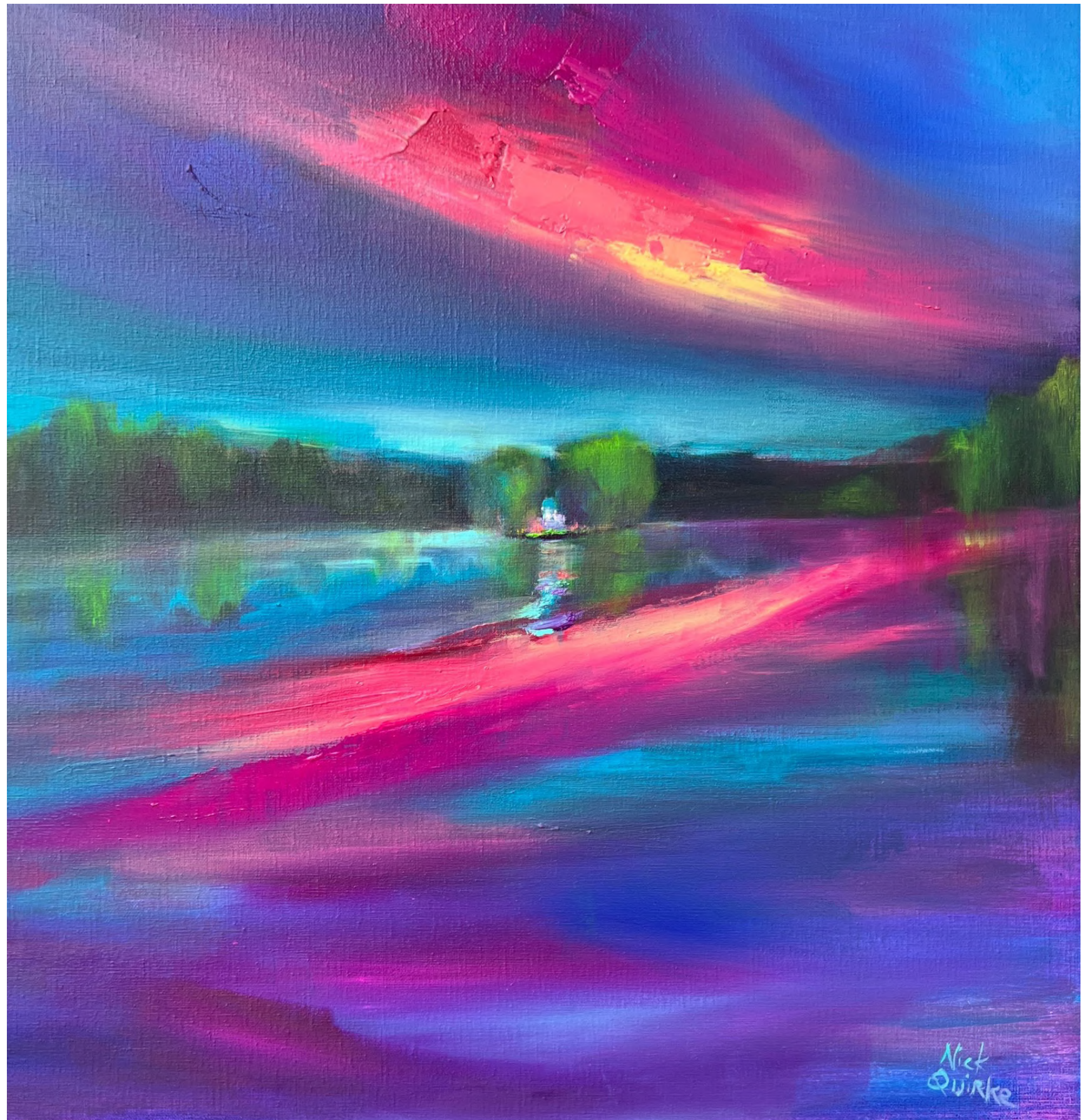




# TWELVE PEAKS



# SILHOUETTE, TEMPLE ISLAND, HENLEY ON THAMES



2024  
Original painting  
73 x 73 cm

Nick  
Quirke



# LOCHABER, GLENFINNAN VIADUCT, SCOTLAND



2024  
Original painting  
70 x 70 cm



# FOUR DIMENSIONS



2024  
Original painting  
120 x 120 cm



# GORING AND STREATLEY WEIR



2024  
Original painting  
61 x 61 cm



# SOMEWHERE IN BETWEEN, SCOTTISH HIGHLANDS



2024  
Original painting  
71x71 cm





# GORING, WINTER SCENE

2024  
Original painting  
71 x 104 cm







# NICK QUIRKE EXHIBITION CATALOGUE

For enquiries, contact:  
[laura@ambergalleries.com](mailto:laura@ambergalleries.com)  
01491 526933

16.02.24 /  
23.02.24

Amber Galleries  
11 Market Place,  
Henley-on-Thames  
RG9 2AA

